

## HOT-TANK SERIES

We can offer a wide range of package pump stations for waste water & sewage applications

### HOT-TANK

Waste Water Pumping System for Hot Water Applications

- Restaurants
- Laundries
- Factories
- Offices
- Schools
- Boiler Houses and Plant Rooms
- Pubs and Clubs
- Hospitals
- Supermarkets
- Warehouses
- Cinemas

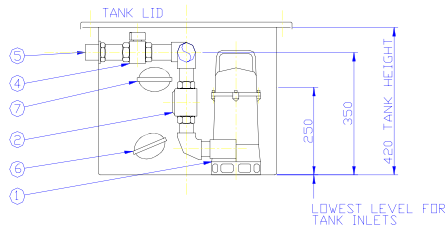
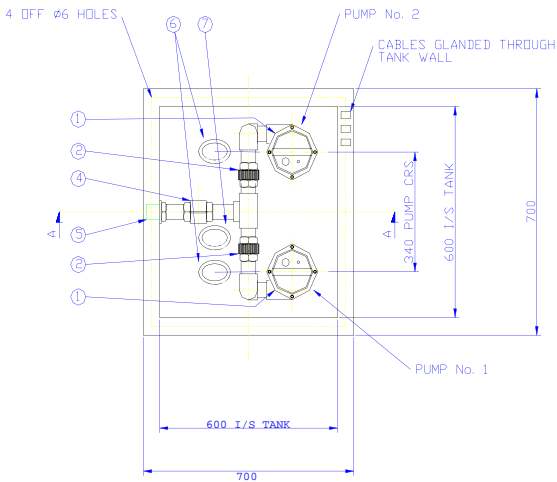
Ideal for use in food preparation areas, commercial kitchens with a number of sinks, dishwashers and glass washers.

The Hot Tank System has been designed to pump waste water up to 90°C, from industrial kitchens, laundries and similar applications.

As well as high temperatures the pumps can handle small solids that may enter the tank from sinks or dishwashers, giving the ideal solution for pumping the waste water.

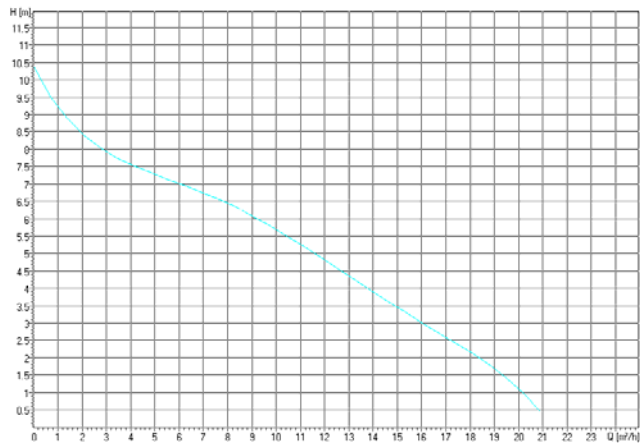
**Features Include:**

1. Pumps capable of a 10m vertical lift.
2. Can handle temperatures up to 90°C, ideal for condensate drainage.
3. Easy to install in small spaces.



Item	Quantity	Description
1	2	High temperature pump
2	2	Non return valve
3	2	Union
4	1	Isolating valve
5	1	Discharge
6	2	Pump float switch
7	1	High level alarm float (If fitted)

Tank constructed in GRP with sealed bolt down lid.  
All inlets and vents to be cut into tank by customer (using tank connectors).  
All inlets must be a minimum of 250mm above the base of the tank.



Pump performance curve